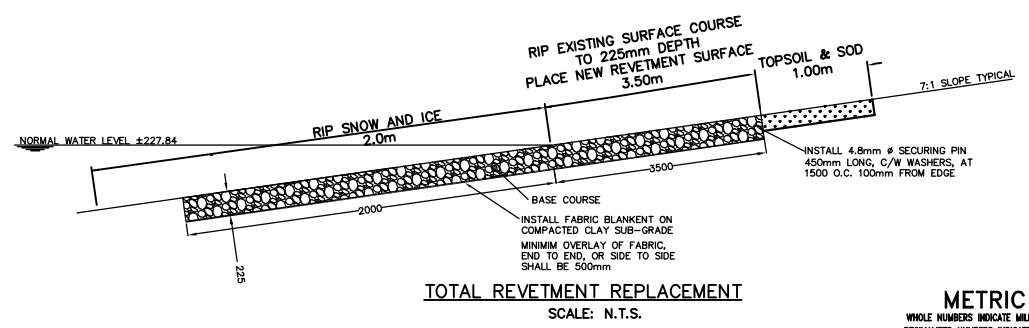


SITE PLAN
SCALE: N.T.S.



TOTAL REVEMENT REPLACEMENT
SCALE: N.T.S.

METRIC
WHOLE NUMBERS INDICATE MILLIMETRES
DECIMALIZED NUMBERS INDICATE METRES

FOR TOTAL REVEMENT REPLACEMENT

1. RIP EXISTING REVEMENT SURFACE COURSE ABOVE AND BELOW NORMAL WATER LEVEL (SEE DETAIL FOR TOTAL REVEMENT REPLACEMENT) TO DEPTH OF 225mm.
2. PREPARE SUB-BASE AND INSTALL FABRIC BLANKET.
3. PLACE NEW REVEMENT SURFACE COARSE.
4. GRADE ENTIRE REVEMENT AREA TO 7:1 SLOPE.
5. SOD 1.0m WIDTH ABOVE TOP EDGE OF NEW REVEMENT SURFACE COURSE.

B.M. ELEV.	FIELD BOOK #
POSTED TO LBIS	
NO. REVISIONS	DATE BY

CITY OF WINNIPEG
WATER AND WASTE
ENGINEERING DIVISION

DESIGNED BY: DGS
CHECKED BY:
DRAWN BY: BH
APPROVED BY:
HOR. SCALE: 1:1000
VERTICAL:
DATE: 2004 01 13
RELEASED FOR CONSTRUCTION

ENGINEER'S SEAL
ORIGINAL SIGNED BY K.R. ZUREK
04/01/14
TENDER : 020-2004

THE CITY OF WINNIPEG
WATER AND WASTE DEPARTMENT

Winnipeg

STORMWATER RETENTION BASIN
LAKE 4-10
LAKESHORE REVEMENT MAINTENANCE WORKS

SHEET 2 OF 2
CITY DRAWING NUMBER
LD-2982